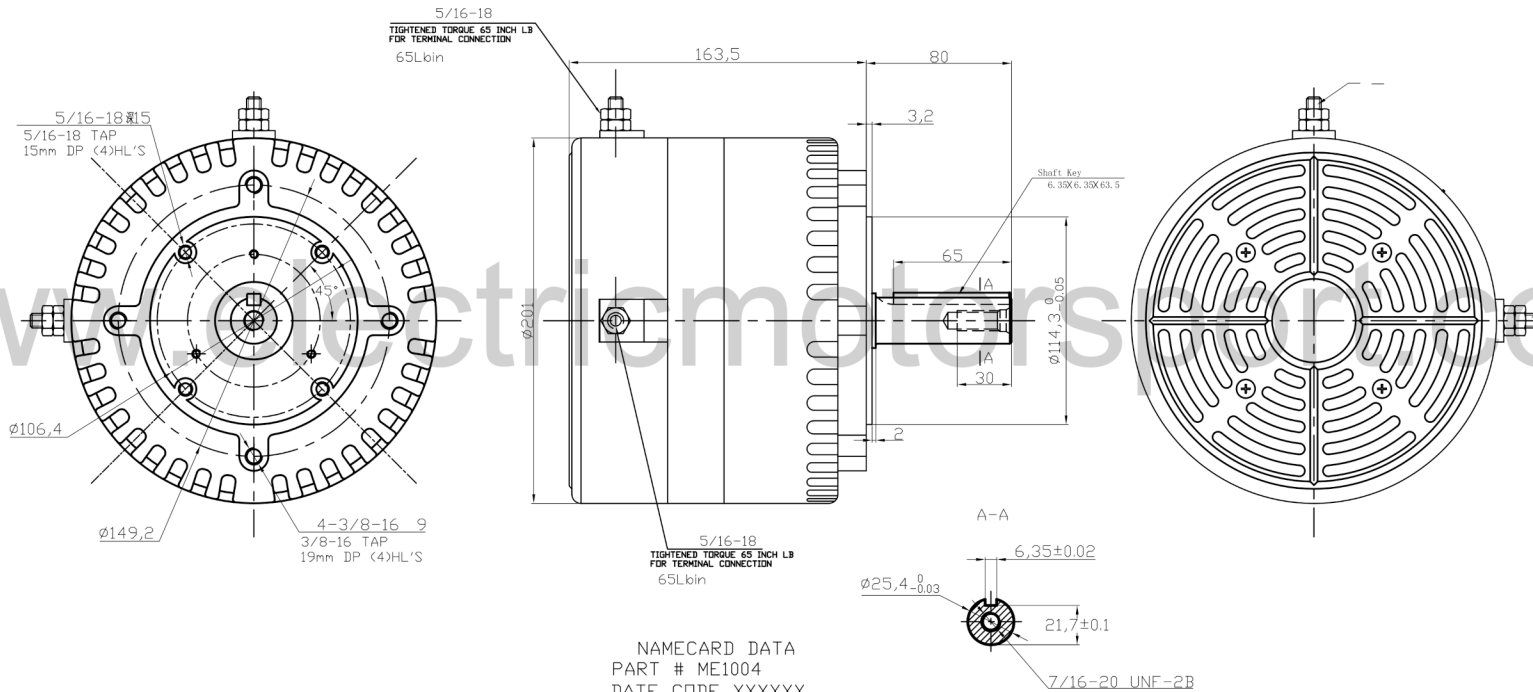


- NOTES:  
 1.CCW  
 2.Front bearing: NTN6006 LLUC3/5K (Made in Japan)  
 3.Product to be shipped in plain white box, styrofoam packaging  
 Include Dyno Plot in box.  
 4.Box to be marked:  
 Part Number: ME1004  
 Made in China



MODEL	(W) POWER(W)	(V.DC) VOLTAGE(V.DC)	(LB-IN) TORQUE (LB-IN)	(RPM) LOADED SPEED(RPM)	(RPM) NO LOAD SPEED(RPM)	(A) CURRENT (A)
ME1004	8000	48	218	3100 <sup>350</sup> / <sub>200</sub>	appr. 3700	≥200

REV	CHANGES	BY	ECO NO.	DATE	DO NOT SCALE DRAWING THIS DRAWING IS PROPRIETARY PROPERTY OF MARS ELECTRIC LLC CORPORATION DISCLOSED IN CONFIDENCE WHICH MAY NOT BE USED OR DISCLOSED WITHOUT PERMISSION. RETURN PROMPTLY AFTER USE.	DIMENSIONING AND TOLERANCING PER ANSI Y14.5M-1994	MATERIAL	TITLE	DESIGN VENDOR: -
-	-	-	-	-	-	-	-	OUTLINE	MILWAUKEE, WISCONSIN, U.S.A.
-	-	-	-	-	-	-	-	DRAWN: lxp 10.04.25	-
-	-	-	-	-	-	-	-	APPR:	-
-	-	-	-	-	-	-	-	DEPT:	-
-	-	-	-	-	-	-	-	SCALE:	-
-	-	-	-	-	-	-	-	S/N:	-
-	-	-	-	-	-	-	-	MODEL NO:	-
-	-	-	-	-	-	-	-	DESIGN VENDOR: -	0JW1.301.355
-	-	-	-	-	-	-	-	DESIGN VENDOR: -	REV 1/1
-	-	-	-	-	-	-	-	DESIGN VENDOR: -	SHEET 1/1